

## 1. USER MANUAL LCD C900 USB

### 1.1. REMOTE AND DISPLAY APPEARANCE



USB 2.0

### 1.2. TURNING ON / OFF THE DISPLAY



Press and hold the ON / OFF button for 3 seconds to turn the LCD on or off.

- When the display is off, there is no battery consumption. The current flow is not more than 2  $\mu$ A.
- The panel will revert to sleep mode when the speed is 5 minutes level 0 km / h.

### 1.3. MOTOR POWER INDICATION



Indicates the power with which the motor works, when the entire power bar is displayed, this means that the motor works at full power. The battery is discharged faster then.

### 1.4. BATTERY SOC INDICATOR



The battery level is indicated by symbol located in the battery symbol in the upper left corner of the display. Each missed part of the symbol corresponds to 20% battery charge. Remember to give more attention to the BMS (voltage), than to battery indicator.

### 1.5. WALK ASSISTANCE



Press and hold the "MINUS" button to start the motor that will go at 6km / h without pedaling. The display will show the icon as in the picture beside. When the user releases the button, the engine will automatically shut down.

## 1.6. BACKLIGHT AND LIGHT INDICATION



With the turned on display, click on / off at once the lights button to turn on the display backlight and the front and rear lights. Click the button again to turn off the backlight and lights. When the light is on, you can see the icon on the screen as in the picture beside.

## 1.7. MOTOR ASSISTANCE LEVEL SELECTION



The level of electric assistance can be adjusted using the display. Adjustments can always be made while driving. The electric system has 6 levels, depending on them the speed to which the bike will accelerate. The default assistance level after turning the display on is "1". To change the assistance level, use the "PLUS" buttons to increase the assistance level or "MINUS" to decrease the assistance level, respectively.

## 1.8. ERROR INDICATION



If an error code appears on the display, contact your dealer immediately to resolve the problem. Each code is matched to a different type of error, more detailed information can be found in the table below.

The display cannot return to normal until the problem is resolved. The e-bike will not work until the problem is resolved.

Error code	Description
21	Current flow fault / Communication fault
22	Throttle fault
23	Motor fault
24	Hall sensor fault
25	Brake levers fault
30	Display connection fault

## 1.9. CURRENT DISPLAY



When the electrical system is turned on, the display will show the speed and distance as defaults.

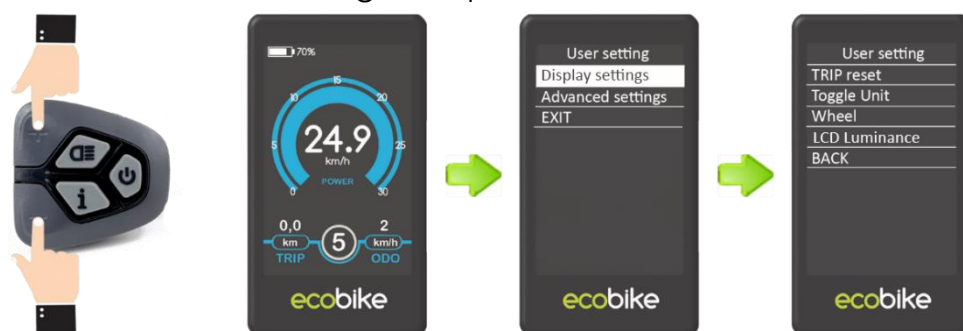
Pressing the "i" button switches between the following information:

Trip distance (km) → ODO (km) → Max. Speed (km / h) → Avg. Speed (km / h) → Time (min.).

## 2. USER SETTINGS

### 2.1. ENTER THE SETTINGS MENU

To enter the display menu, press and hold the "PLUS" and "MINUS" buttons for 3 seconds. Then select "User setting" and press the "i" button.



### 2.2. RESETTING THE TRIP DISTANCE

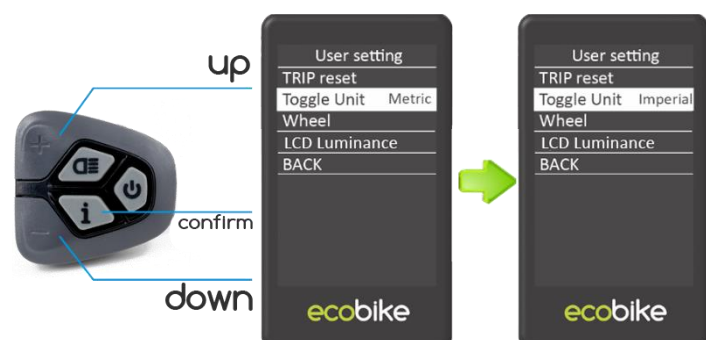
Trip Reset means resetting the trip distance. To reset the trip distance, press the "+" button or the "-" button to select Yes / No.

YES means resetting trip distance. NO means no cleaning trip distance. To save the changed setting, press the "i" button. The default value is NO.



### 2.3. UNIT SETTING

Toggle Unit means setting the measuring unit. To change the unit, press the "+" button or the "-" button to select the desired unit, and then press the "i" button to confirm. To save the changed setting, press the "i" button. The default unit is "Metric (km)".



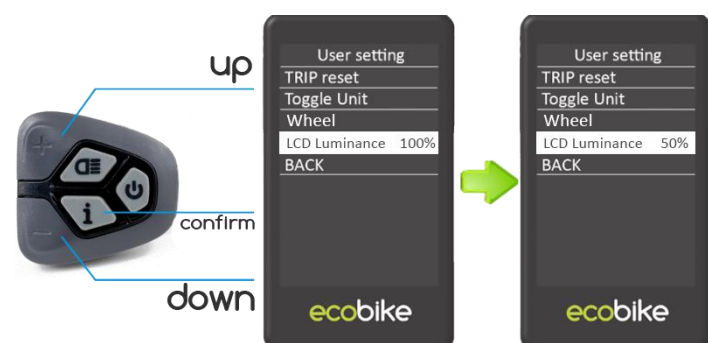
## 2.4. WHEEL SIZE SETTING

Wheel indicates the wheel diameter setting. To change the basic settings, press the "+" or "-" button to increase or decrease until the desired value is displayed. To save the changed setting, press the "i" button. The default value is 28 inches (28 inches). Changing the wheel size will result in incorrect driving data being displayed, including speed, distance travelled and total distance.



## 2.5. LCD LUMINANCE

LCD luminance indicates the brightness of the display backlight. To change the brightness of the backlight, press the "+" or "-" button to select the desired value. To save the changed setting, press the "i" button - The default value is 100%.



## 3. ADVANCED SETTINGS

### 3.1. ADVANCED SETTINGS MENU

To enter the advanced settings of the display press and hold the "PLUS" and "MINUS" buttons for 3 seconds. Then select "Advanced Settings" and press the "i" button. Then enter the correct password to enter the advanced settings interface. The default password is **1212**.



### 3.2. ELECTRIC ASSISTANCE LEVEL RANGE

Assist Levels indicates the settings for the range of assist modes. There are 8 modes to choose from: 0-2, 1-2, 0-4, 1-4, 0-6, 1-6, 0-8, 1-8. The default value is 0-6. To change the range of assist level modes, press the "+" or "-" button to select the desired range of modes, and then press the "i" button to confirm.



### 3.3. VOLTAGE SETTING

Set Voltage indicates the battery voltage bar (battery level) settings. Enter 5 voltage values one after the other. For example, VOL 1 is the first stage voltage value. The default value is 41.5 V.

To set the battery voltage bar, press the "+" or "-" button to increase or decrease the value. To save the changed setting and access the second bar, press the "i" button. After entering 5 voltage values, press the "i" button to confirm and save the settings. If no operation is performed for one minute, the display will close the settings menu automatically.



### 3.4. SPEED LIMIT (BIKE AND THROTTLE)

Using the "Speed Limit" and "Throttle speed" settings, you can unlock the motor to full power by changing the speed limit of the assist and throttle grip. Changing these settings allows the motor to accelerate the bike to a speed of 45 km/h while pedaling or up to 40 km/h using a throttle grip. It should be noted, that such changes in parameters are forbidden by road traffic regulations, and their use is allowed only outside public roads.